

48

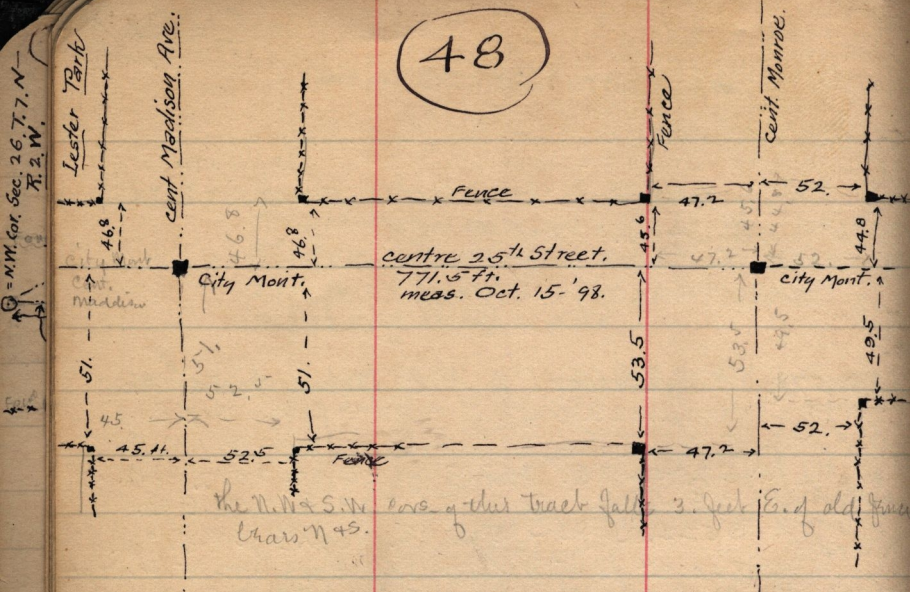


Diagram of fence-lines on 25th bet Madison and Monroe. Ogden City on survey for C.M. Clay.

2.

Oct 20. 1898. Description of Land, furnished by Boothe.
 Ft Lot 27.-B4. South Ogden Survey. Beg. 162. ft E. of N.W. Cor. sd lot
 E. 60. ft. - S 132. ft. W. 60. ft. N. 132. ft. to beg. (Sam. Munson assisted)

